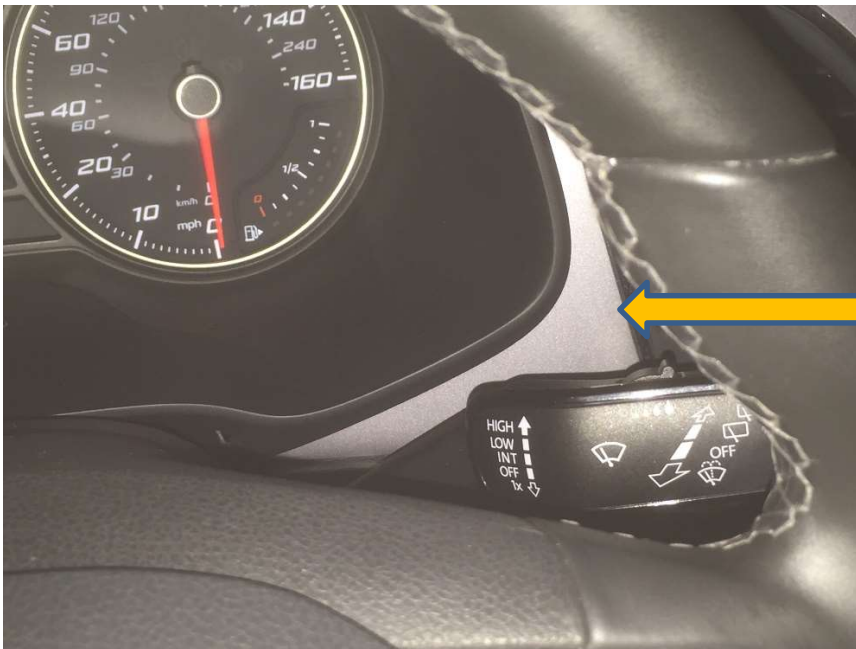


The examiner will ask you one:

- 'tell me' question (where you explain how you'd carry out a safety task) at the start of your test, before you start driving
- 'show me' question (where you show how you'd carry out a safety task) while you're driving

'Show me' questions

When it's safe to do so, can you show me how you wash and clean the rear windscreen?



The windscreen wipers are operated on the stalk to the right of the steering column. To clean the rear window, push the stalk towards the dashboard until you hear the pump operate and deliver water to the rear screen. After operation return the stalk to the normal position.

When it's safe to do so, can you show me how you wash and clean the front windscreen?



The windscreen wipers are operated on the stalk to the right of the steering column. To clean the front window. Pull the indicator stalk toward you until water is pumped on to the front windscreen. The stalk will return to the normal position

In this car all the lighting and heating controls are on a touch pad below the air vent to the right of the steering wheel.



The touch panel is here!

This is the headlight's mode button.



The touch panel will look like this when no lights or heating controls are active. The headlights are automatic and will come on in poor light.

When it is safe to do so, can you show me how you'd switch on your dipped headlights?



To switch from Auto to dipped headlights touch the mode button once.

Note that both the dipped headlights and side light symbols are now illuminated in green.

When it's safe to do so, can you show me how you'd set the rear demister?



On the touch pad touch the bottom right symbol showing a heating element above the word REAR.

The symbol will now display as in the picture. N.B. the lights are in Auto mode.

When it's safe to do so, can you show me how you'd operate the horn?

The horn is located in the centre of the steering wheel. Press the horn listening for the desired sound. (The horn should usually be checked when off the road)

When it's safe to do so, can you show me how you'd demist the front windscreen?

On the touch pad touch the bottom left symbol showing a heating element above the word MAX.

The symbol will now display as in the picture. N.B. the lights are in Auto mode.



When it's safe to do so, can you show me how you'd open and close the side window?



The windows are opened using the switches on the driver's door handle. There is a separate switch for each window. To open the relevant window, press the corresponding switch to open. To close the window pull the same switch up until the window closes.

'Tell me' questions

Tell me how you'd check that the brakes are working before starting a journey.

Start the car moving and depress the brake pedal. Brakes should not feel spongy or slack, and the vehicle should not pull to one side.

Tell me where you'd find the information for the recommended tyre pressures for this car and how tyre pressures should be checked.

Information will be found using the car manufacturer's manual. Check the tyre pressures by using a reliable pressure gauge when the tyres are cold. Don't forget the spare and remember to refit the valve caps.

Tell me how you make sure your head restraint is correctly adjusted so it provides the best protection in the event of a crash.

The head restraint should be adjusted so the rigid part of the head restraint is at least as high as the eye or top of the ears, and as close to the back of the head as is comfortable. Note: Some restraints might not be adjustable.

Tell me how you'd check the tyres to ensure that they have sufficient tread depth and that their general condition is safe to use on the road.

There should be no cuts and bulges, and a minimum of 1.6mm of tread depth across the central three-quarters of the breadth of the tyre, and around the entire outer circumference of the tyre.

Tell me how you'd check that the headlights and tail lights are working. You don't need to exit the vehicle.

Explain you'd operate the switch (turn on ignition if necessary), then walk round vehicle (as this is a 'tell me' question, you don't need to physically check the lights).

Tell me how you'd know if there was a problem with your anti-lock braking system.

A warning light should illuminate if there is a fault with the anti-lock braking system.

Tell me how you'd check the direction indicators are working. You don't need to exit the vehicle.

Explain you'd operate the switch (turn on ignition if necessary), and then walk round vehicle (as this is a 'tell me' question, you don't need to physically check the lights).

Tell me how you'd check the brake lights are working on this car.

Explain you'd operate the brake pedal, make use of reflections in windows or doors, or ask someone to help.

Tell me how you'd check the power-assisted steering is working before starting a journey.

If the steering becomes heavy, the system may not be working properly. Before starting a journey, 2 simple checks can be made.

Gentle pressure on the steering wheel, maintained while the engine is started, should result in a slight but noticeable movement as the system begins to operate. Alternatively turning the steering wheel just after moving off will give an immediate indication that the power assistance is functioning.

Tell me how you'd switch on the rear fog light(s) and explain when you'd use it/them. You don't need to exit the vehicle.



Touch the top right symbol on the touch pad displaying a light above the word REAR



The rear fog light warning is illuminated in the right bottom corner of the digital display. N.B. this may not be the view that is active in the car.

Tell me how you switch your headlight from dipped to main beam and explain how you'd know the main beam is on.

The main beam headlights are operated by pushing the indicator stalk towards the dashboard. A warning light is illuminated in the speedometer. To turn the main beam headlights off pull the indicator stalk towards you.

Under the Bonnet



Tell me how you'd check that the engine has sufficient oil.

Identify dipstick/oil level indicator, describe check of oil level against the minimum and maximum markers.



The dipstick is here, you would wipe clean, dip in the same opening and check levels as required. Replace back in the opening once completed

Tell me how you'd check that the engine has sufficient engine coolant.

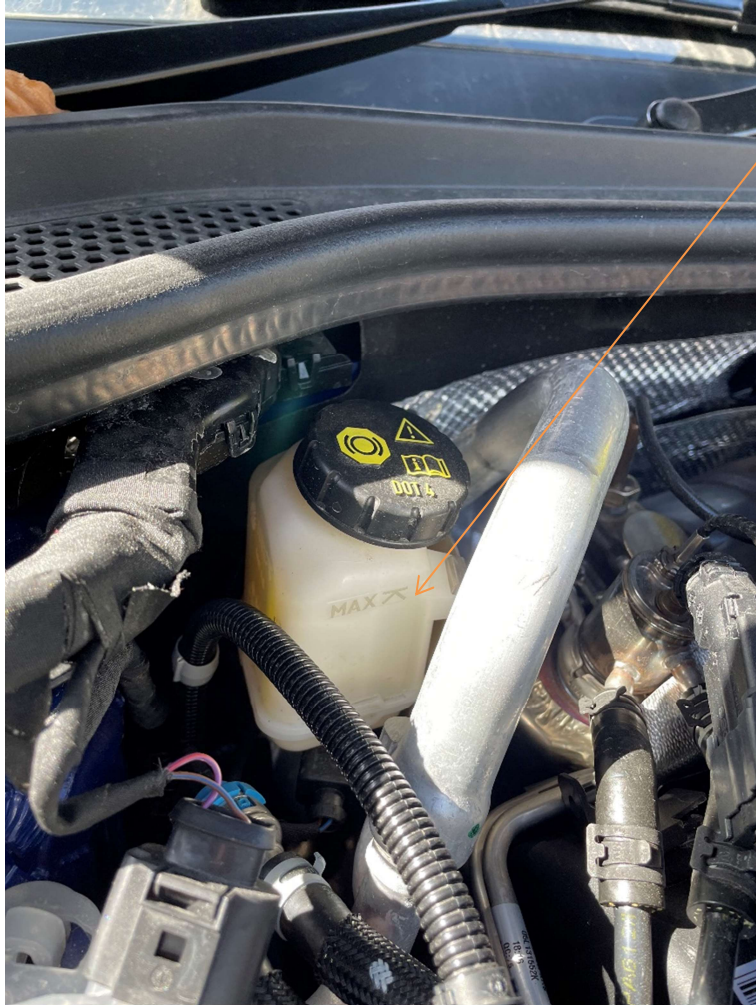
Identify high and low level markings on header tank where fitted or radiator filler cap, and describe how to top up to correct level.



This is the engine coolant reservoir. The min and max levels are marked on the front.

Tell me how you'd check that you have a safe level of hydraulic brake fluid.

Identify reservoir, check level against high and low markings.



This is the hydraulic reservoir, the min and max levels are marked on the front.

Note: Failure on one or both of the show me tell me questions will result in one minor fault.